

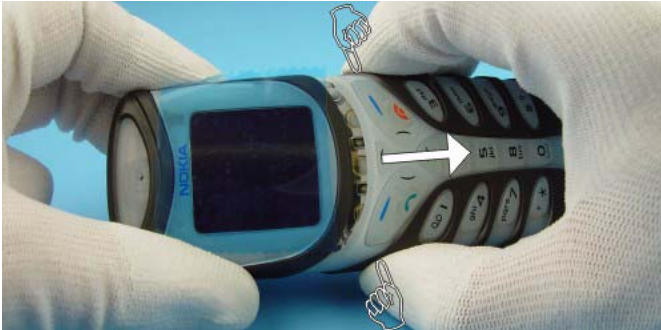
**Customer Care Solutions**  
**NPM-6/6X Series Transceivers**

**Disassembly and Assembly**  
**Instructions**

Disassembling instructions .....	4
Exchange of system connector.....	6
Exchange of battery connector.....	8

### Disassembling instructions

*Note! It is only allowed to reassemble C-Cover (phone) once. For second reassembling use of new C-Cover is mandatory! Use new screws in general.*



Press the grip markings on both sides of the B-Shell and remove B-Shell.



To remove the A-Shell press Locking Springs as shown and pull A-Shell from the unit.

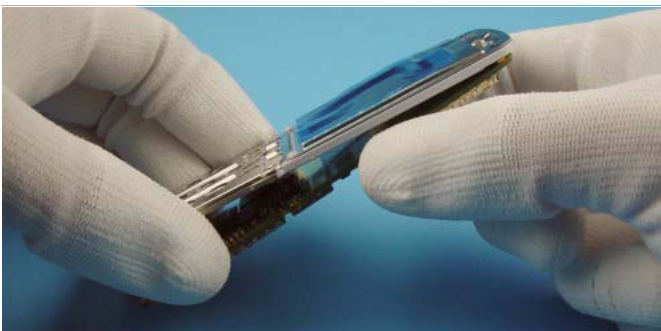


Tightening torques for screws (Note! Two tightening torques!): -screws 1-4, use 40 Ncm  
-screws 5-6, use 25 Ncm.

Tightening order for screws is from 1 to 6. When tightening the screws 5 and 6 it is necessary to press strongly the system connector against C-cover to avoid sealing tape twisting in the system connector. If the sealing tape twists with screwassembly it is not waterproof anymore. **Note!** The screws can be assembled only once.



Remove engine from C-Cover.



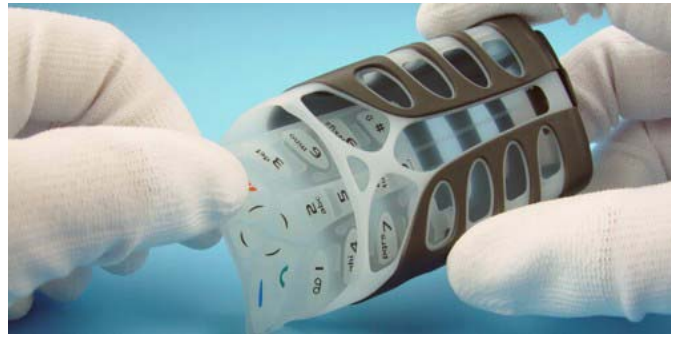
Separate the UI-Module from Radio Module carefully, because of the board-to-board-connector.



Use tweezers to remove Vibra Motor.

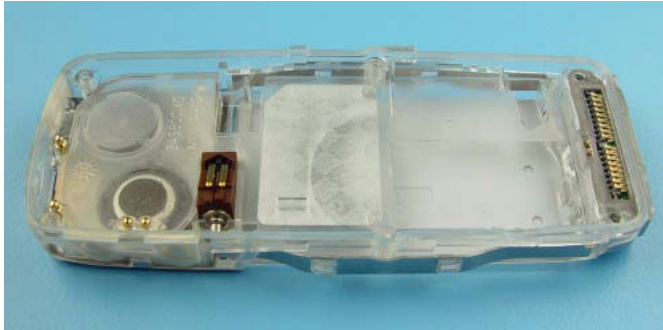


Remove Earpiece. Note the guiding pin when assembling.



Remove Keypad.

## Exchange of system connector



The System Connector is attached with double-sided adhesive gasket to C-Cover. Also note the gasket on C-Cover.



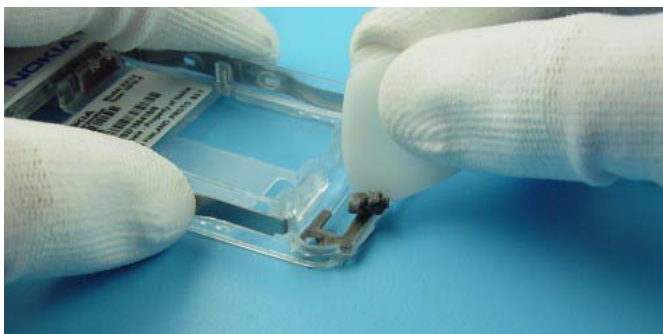
Press SRT-6 between C-Cover and System Connector and remove Battery Cover.



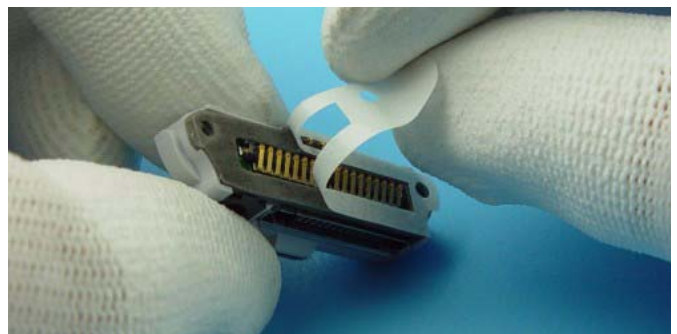
Press again SRT-6 between C-Cover and System Connector and remove System Connector.



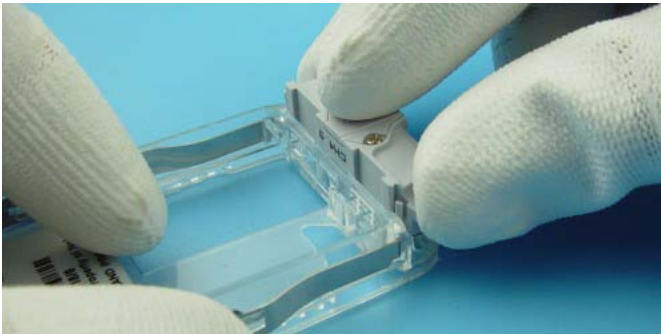
Remove System Connector.



To remove the remaining adhesive gasket use SRT-6 only. **Do not use sharp-edged tools for this procedure.**



Remove protection foil from System Connector.

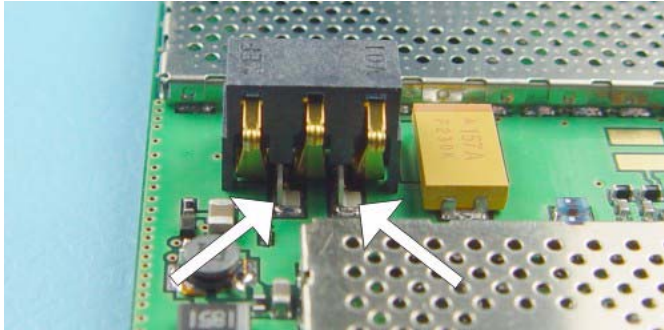


Place System Connector to its guidance exactly.

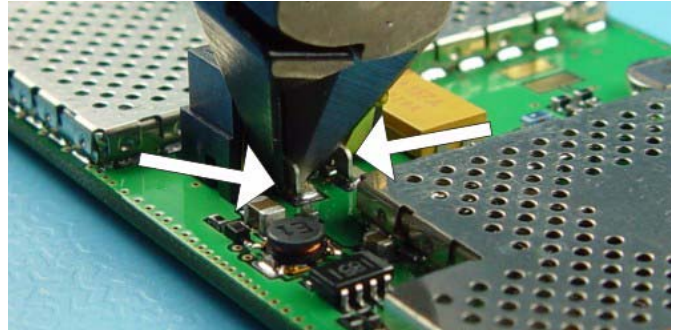


Now press connector to C-Cover firmly, while taking care not to slip C-Cover on your table.

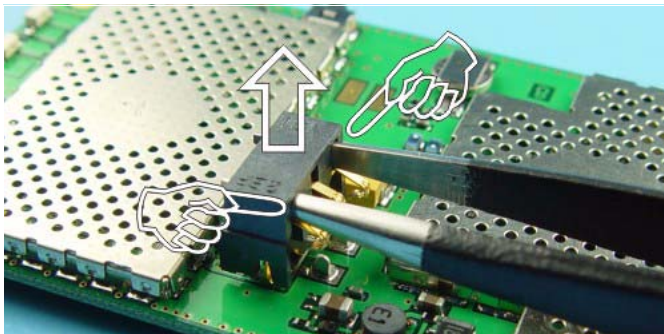
## Exchange of battery connector



These are the two soldered support angles.



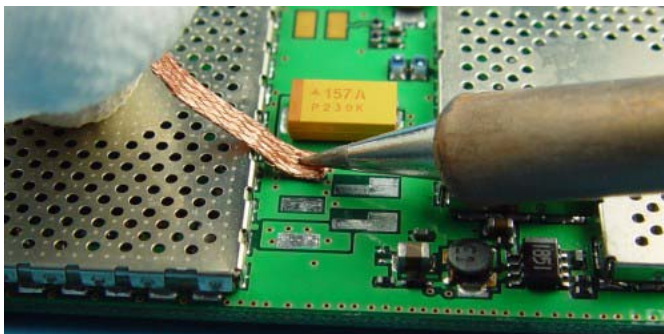
Use a side cutter to cut the support angles.



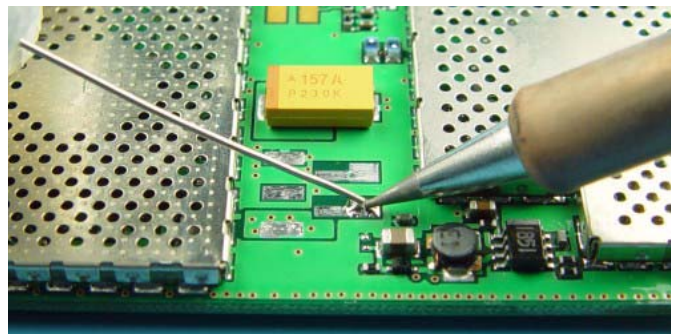
Push tweezers in outer openings of battery connector and lift up the plastic cover.



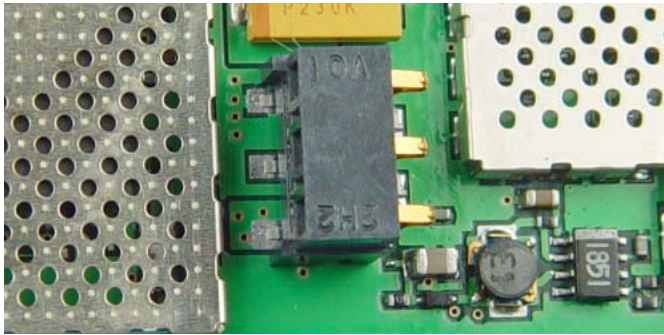
Desolder all pins and clean the pads.



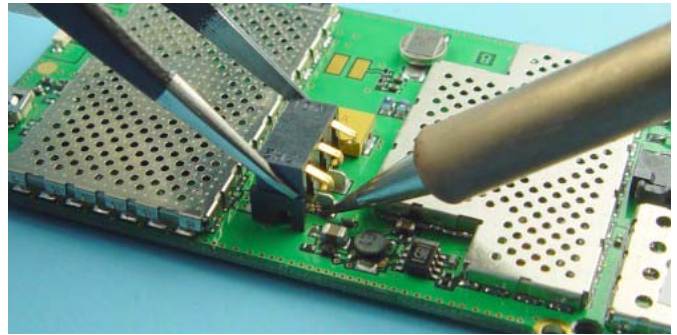
Note that you need a soldering iron with higher temperature when cleaning or soldering the grounding pad.



Tin one of pads to fix the connector before soldering the following pins.



Note location of connector pins and support angles to fit them precisely.



Solder first support angle. When position is exact, solder the other pins.